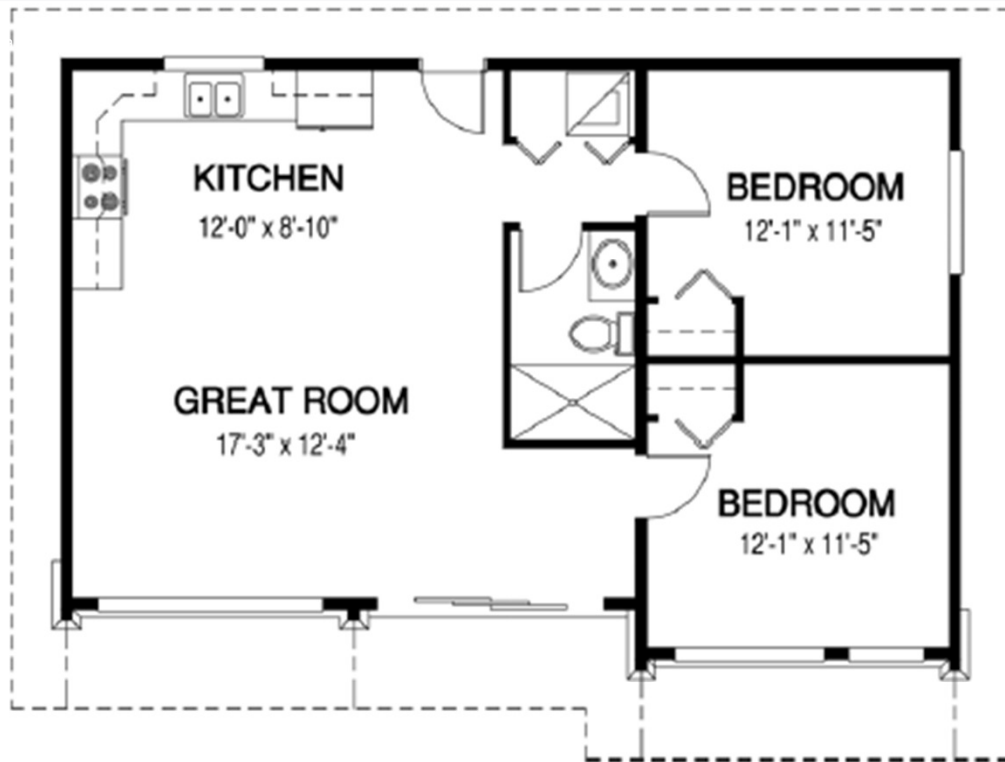


# The Northwynd 1



Designs, Floor Plans & Images © Linwood Homes

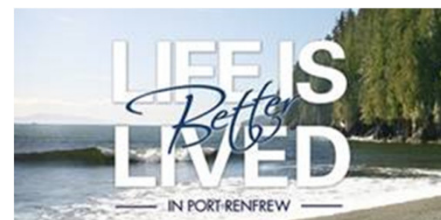
WIDTH: 36 ft. | DEPTH: 25 ft. | MAIN FLOOR: 818 sq.ft. | UPPER FLOOR: — sq.ft. | TOTAL AREA: 818 sq.ft.



MAIN FLOOR



See over 400 Plans at [www.linwoodhomes.com](http://www.linwoodhomes.com)  
[mtaylor@linwoodhomes.com](mailto:mtaylor@linwoodhomes.com) 1-800-267-4586

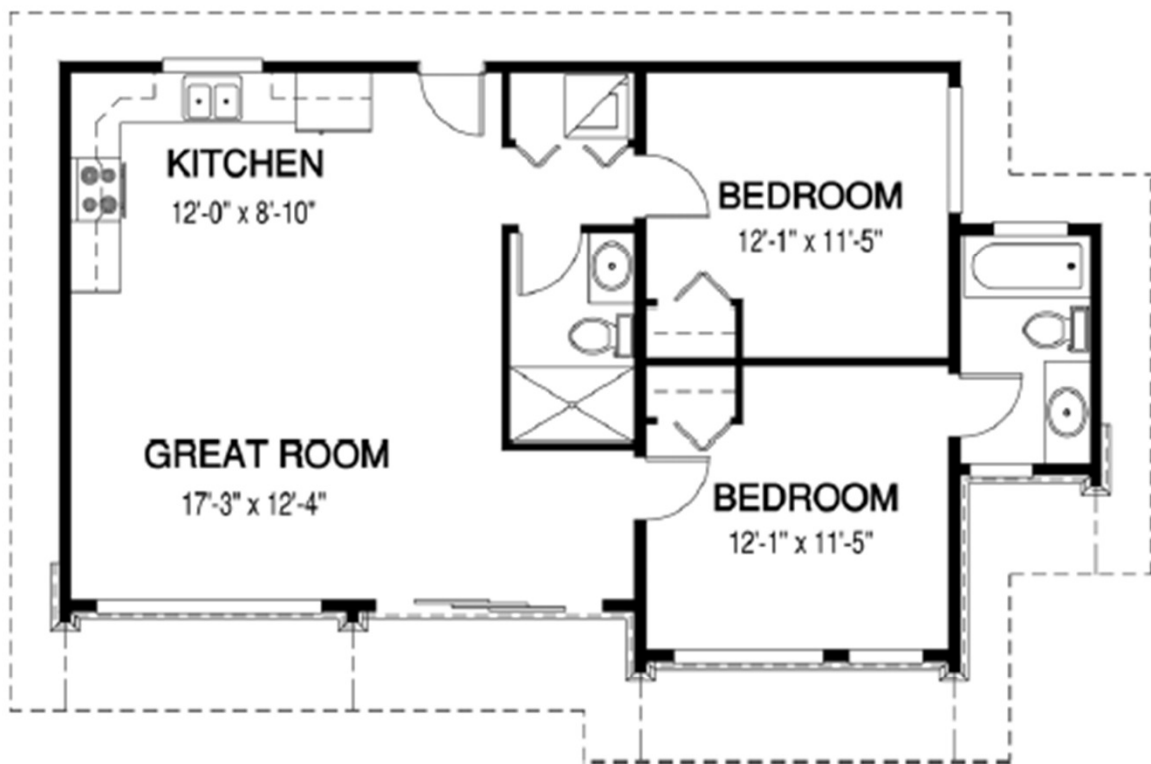


# The Northwynd 2



Designs, Floor Plans & Images © Linwood Homes

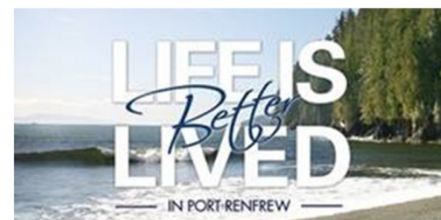
WIDTH: 42 ft. | DEPTH: 25 ft. | MAIN FLOOR: 875 sq.ft. | UPPER FLOOR: — sq.ft. | TOTAL AREA: 875 sq.ft.



MAIN FLOOR



See over 400 Plans at [www.linwoodhomes.com](http://www.linwoodhomes.com)  
[mtaylor@linwoodhomes.com](mailto:mtaylor@linwoodhomes.com) 1-800-267-4586



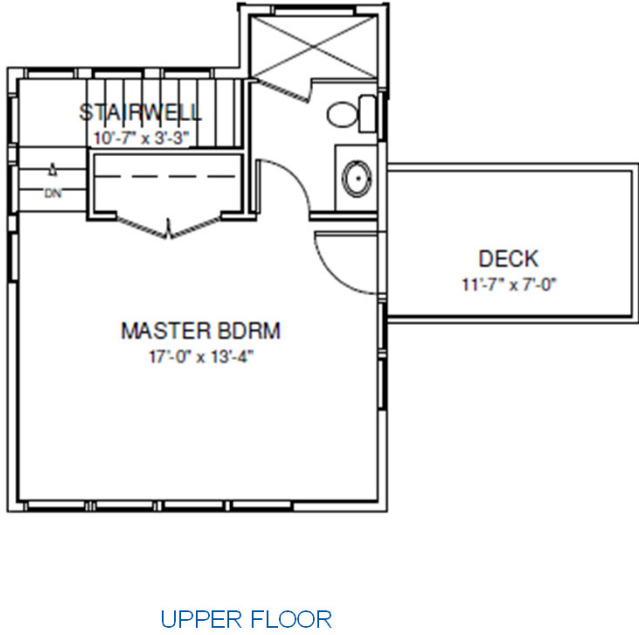
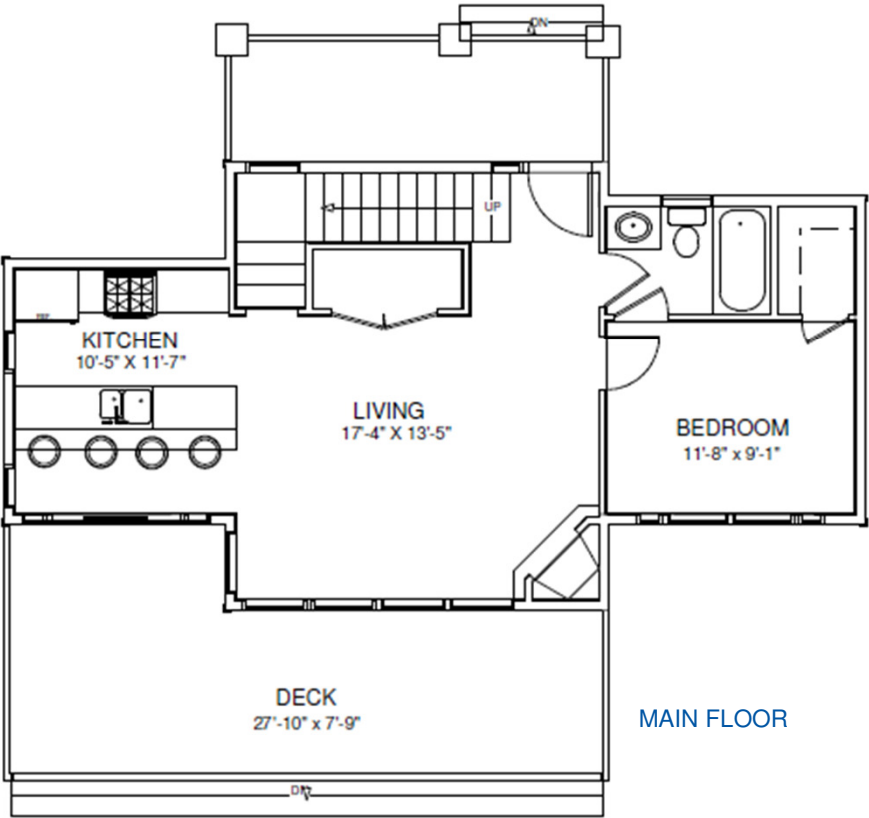


# The Renfrew



Designs, Floor Plans & Images © Linwood Homes

WIDTH: 41 ft. | DEPTH: 35 ft. | MAIN FLOOR: 693 sq.ft. | UPPER FLOOR: 346 sq.ft. | TOTAL AREA: 1039 sq.ft.



See over 400 Plans at [www.linwoodhomes.com](http://www.linwoodhomes.com)  
[mtaylor@linwoodhomes.com](mailto:mtaylor@linwoodhomes.com) 1-800-267-4586

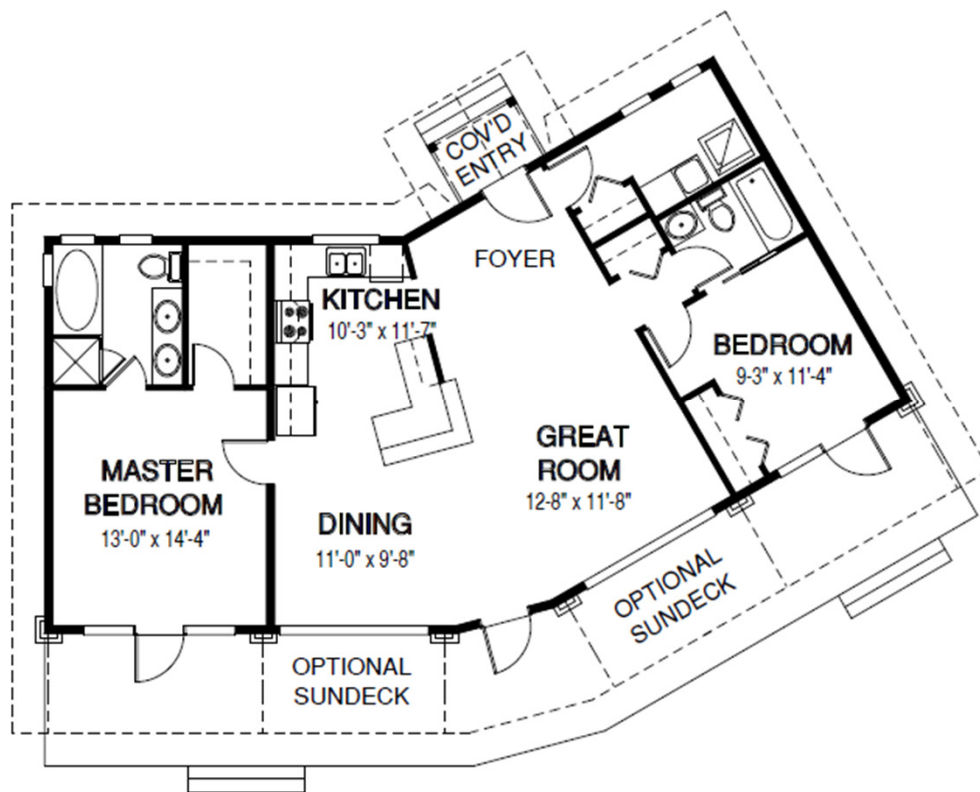


# The Camano



Designs, Floor Plans & Images © Linwood Homes Ltd.

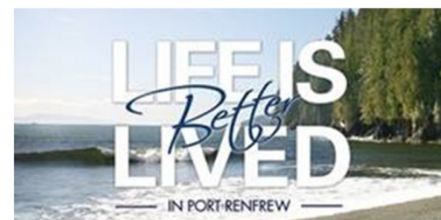
WIDTH: 53 ft. | DEPTH: 35 ft. | MAIN FLOOR: 1194 sq.ft. | UPPER FLOOR: 0 sq.ft. | TOTAL AREA: 1194 sq.ft.



MAIN FLOOR



See over 400 Plans at [www.linwoodhomes.com](http://www.linwoodhomes.com)  
[mtaylor@linwoodhomes.com](mailto:mtaylor@linwoodhomes.com) 1-800-267-4586



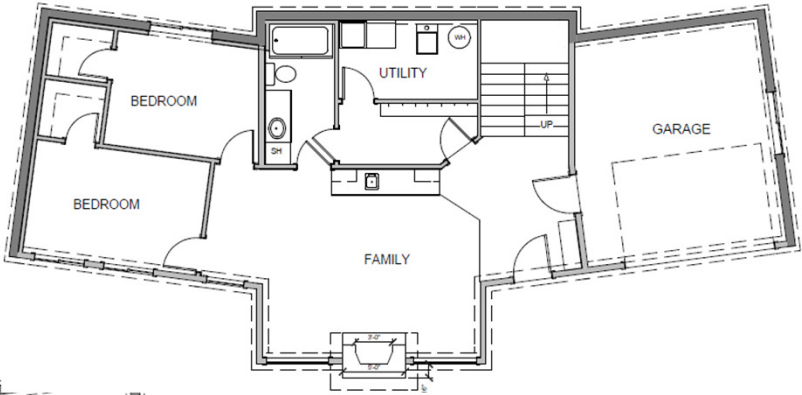


# The Albion 2

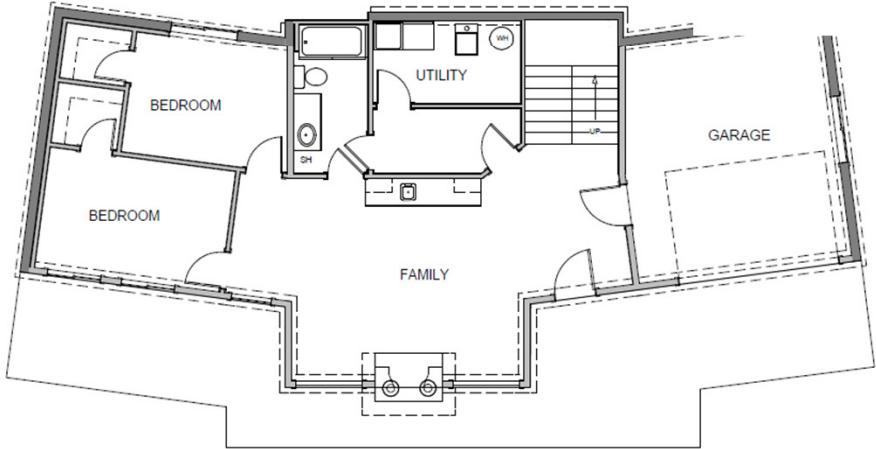


Designs, Floor Plans & Images © Linwood Homes

WIDTH: 65 ft. | DEPTH: 36 ft. | MAIN FLOOR: 1360 sq.ft. | LOWER FLOOR: 0 sq.ft. | TOTAL AREA: 1360 sq.ft.



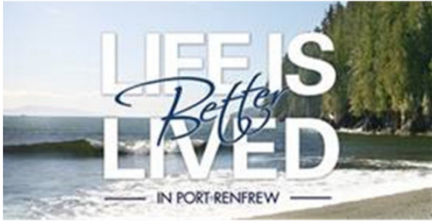
OPTIONAL LOWER



MAIN FLOOR



See over 400 Plans at [www.linwoodhomes.com](http://www.linwoodhomes.com)  
[mtaylor@linwoodhomes.com](mailto:mtaylor@linwoodhomes.com) 1-800-267-4586

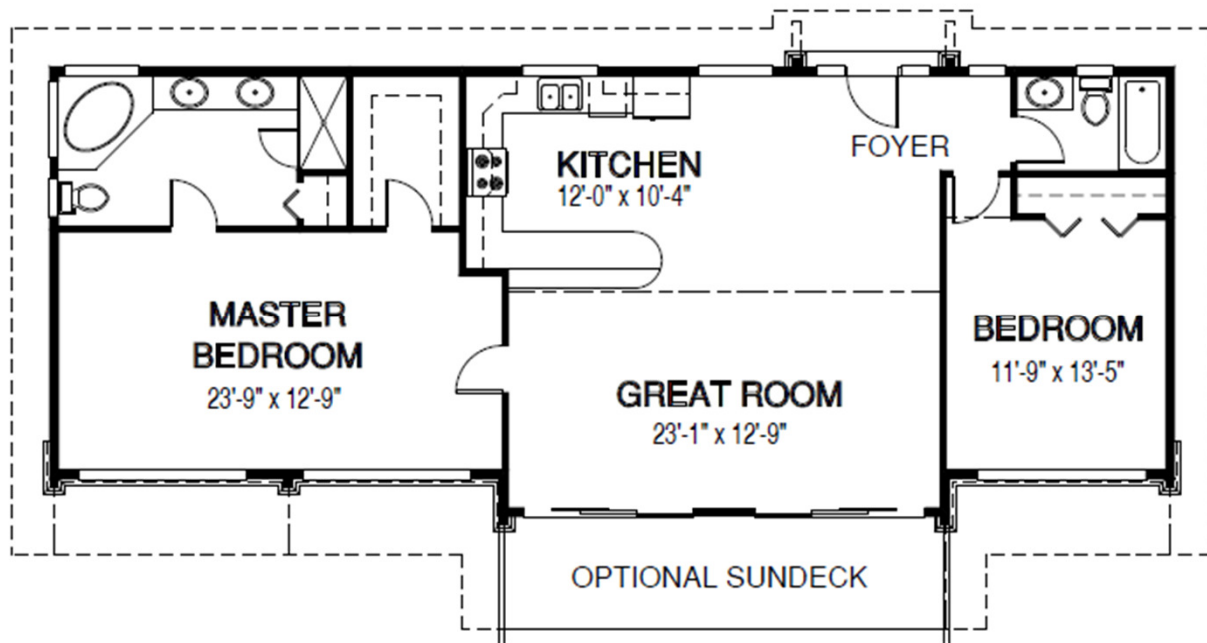


# The Silva Bay



Designs, Floor Plans & Images © Linwood Homes Ltd.

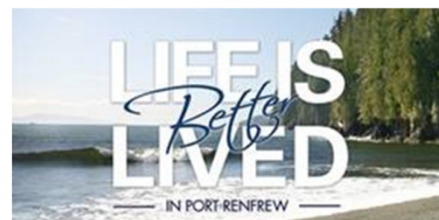
WIDTH: 60 ft. | DEPTH: 25 ft. | MAIN FLOOR: 1368 sq.ft. | UPPER FLOOR: 0 sq.ft. | TOTAL AREA: 1368 sq.ft.



MAIN FLOOR



See over 400 Plans at [www.linwoodhomes.com](http://www.linwoodhomes.com)  
[mtaylor@linwoodhomes.com](mailto:mtaylor@linwoodhomes.com) 1-800-267-4586



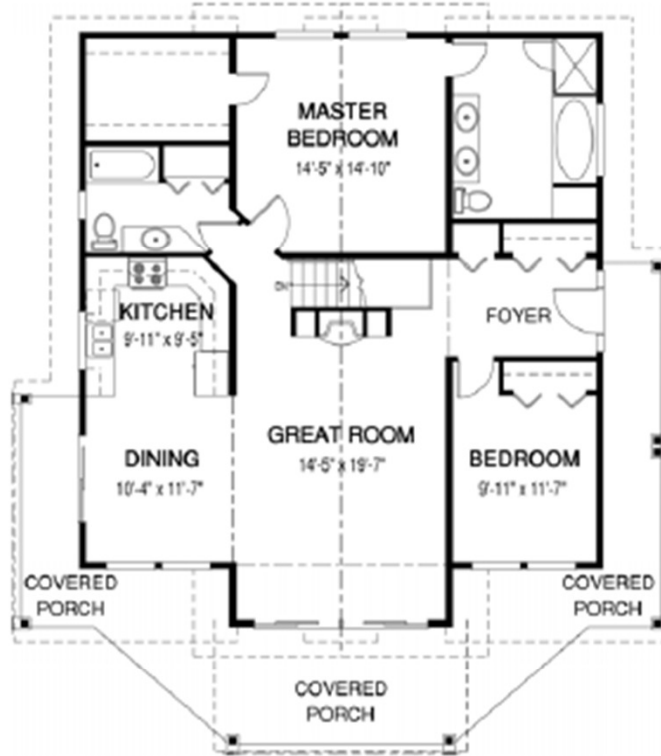


# The Carmel



Designs, Floor Plans & Images © Linwood Homes Ltd.

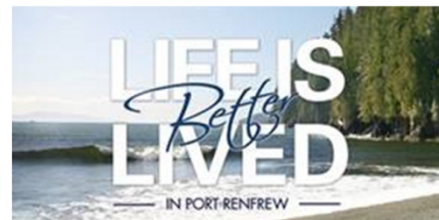
WIDTH: 44 ft. | DEPTH: 49 ft. | MAIN FLOOR: 1393 sq.ft. | UPPER FLOOR: — sq.ft. | TOTAL AREA: 1393 sq.ft.



MAIN FLOOR



See over 400 Plans at [www.linwoodhomes.com](http://www.linwoodhomes.com)  
[mtaylor@linwoodhomes.com](mailto:mtaylor@linwoodhomes.com) 1-800-267-4586

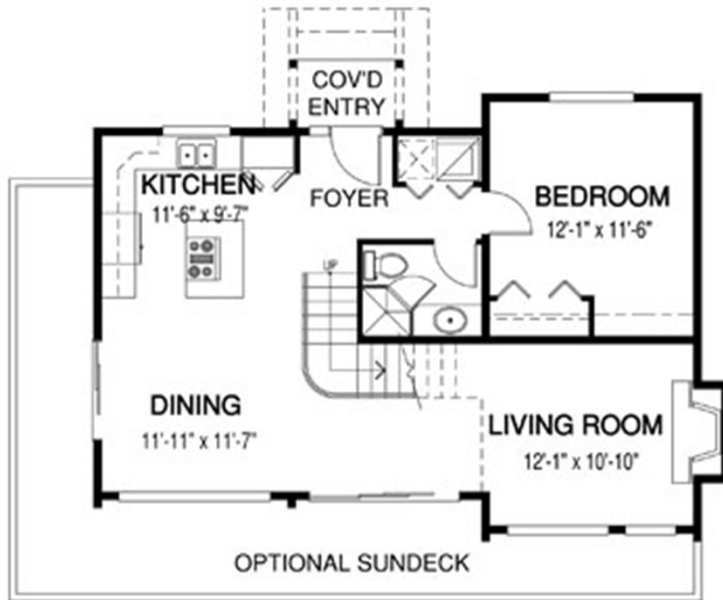


# The Northwynd 3

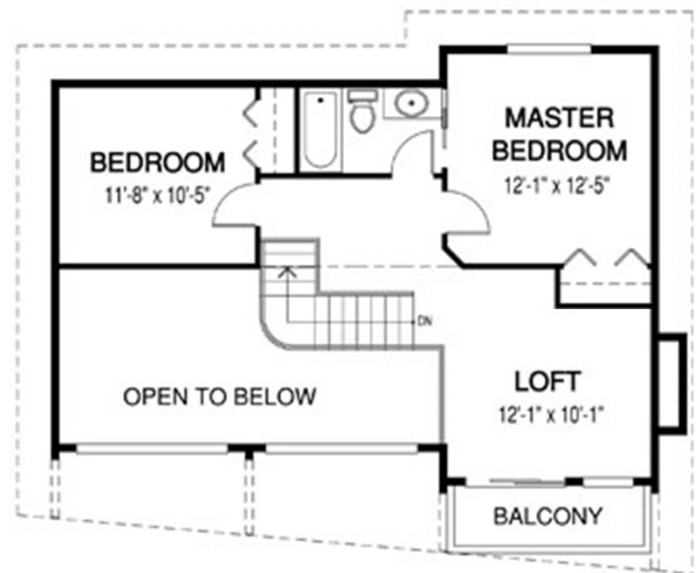


Designs, Floor Plans & Images © Linwood Homes Ltd.

WIDTH: 36 ft. | DEPTH: 29 ft. | MAIN FLOOR: 844 sq.ft. | UPPER FLOOR: 606 sq.ft. | TOTAL AREA: 1450 sq.ft.



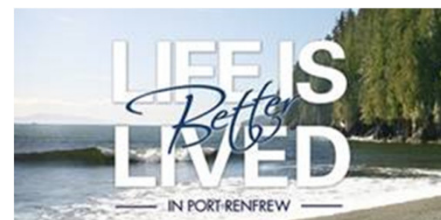
MAIN FLOOR



UPPER FLOOR



See over 400 Plans at [www.linwoodhomes.com](http://www.linwoodhomes.com)  
[mtaylor@linwoodhomes.com](mailto:mtaylor@linwoodhomes.com) 1-800-267-4586



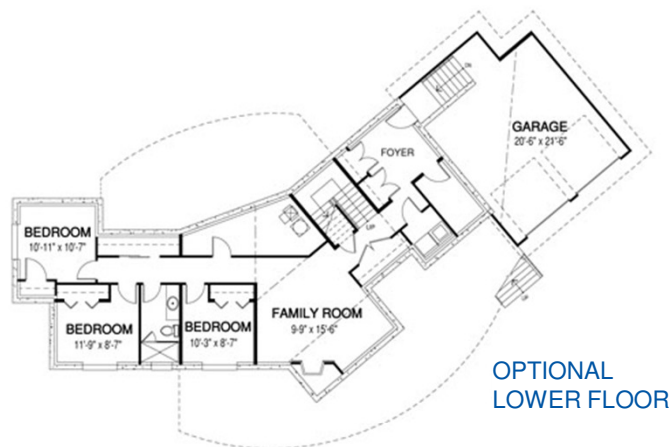


# The Rushmore

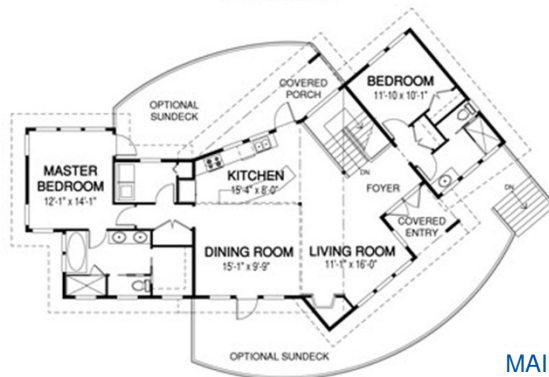


Designs, Floor Plans & Images © Linwood Homes Ltd.

WIDTH: 90 ft. | DEPTH: 54 ft. | MAIN FLOOR: 1535 sq.ft. | LOWER FLOOR: 0 sq.ft. | TOTAL AREA: 1535 sq.ft.



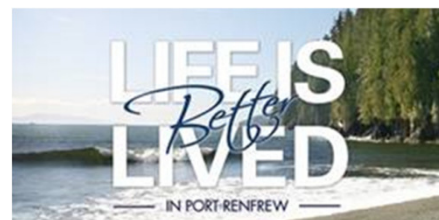
OPTIONAL LOWER FLOOR



MAIN FLOOR



See over 400 Plans at [www.linwoodhomes.com](http://www.linwoodhomes.com)  
[mtaylor@linwoodhomes.com](mailto:mtaylor@linwoodhomes.com) 1-800-267-4586

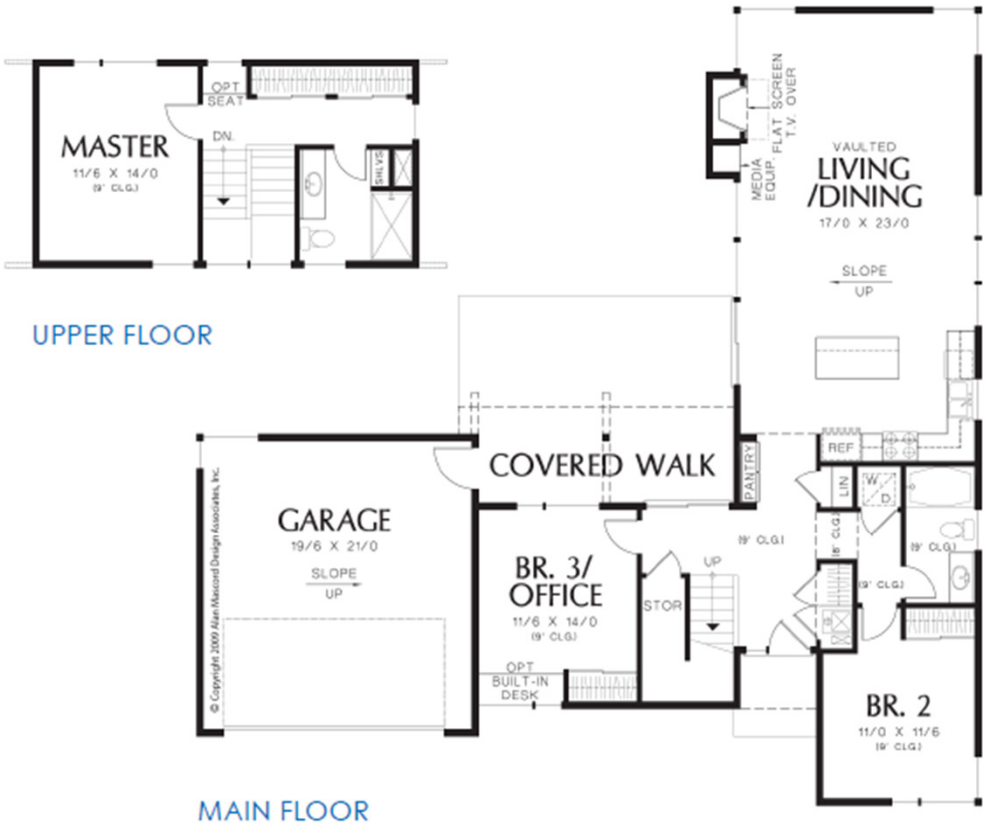


# The Caldersyke

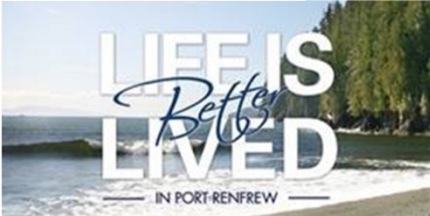


Designs, Floor Plans & Images © Linwood Homes Ltd.

WIDTH: 57 ft. | DEPTH: 58 ft. | MAIN FLOOR: 1280 sq.ft. | UPPER FLOOR: 363 sq.ft. | TOTAL AREA: 1643 sq.ft.



See over 400 Plans at [www.linwoodhomes.com](http://www.linwoodhomes.com)  
 mtaylor@linwoodhomes.com 1-800-267-4586



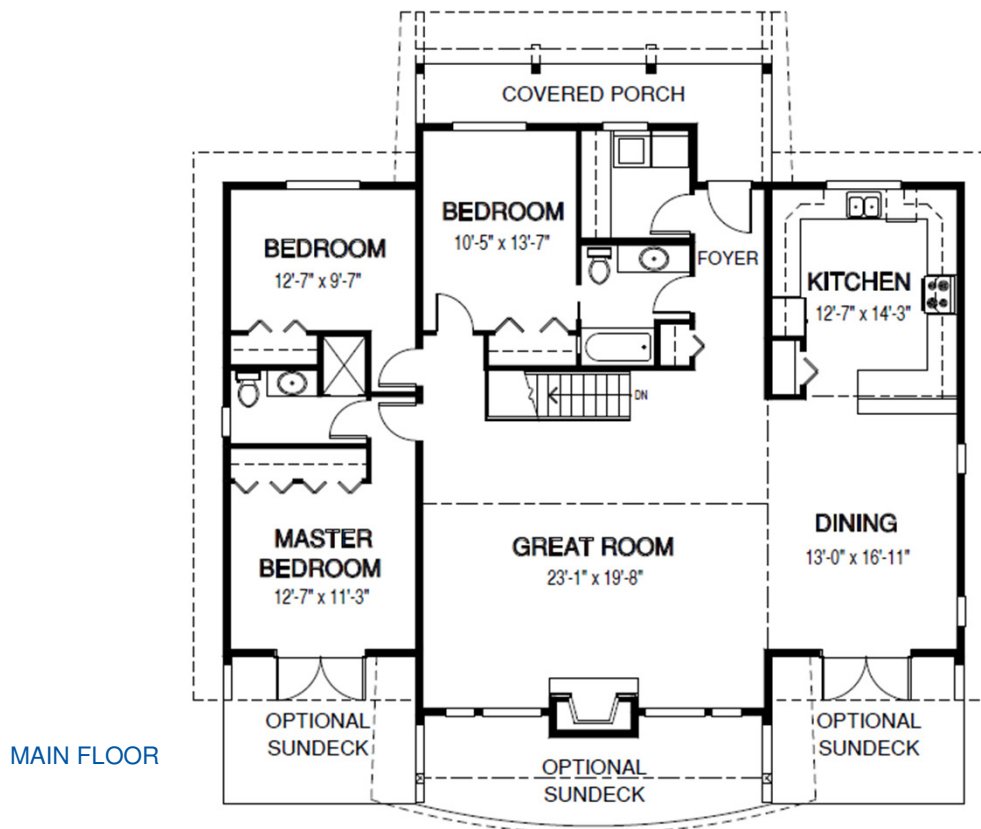


# The Sonoma 2

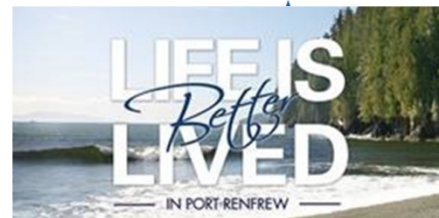


Designs, Floor Plans & Images © Linwood Homes Ltd.

WIDTH: 50 ft. | DEPTH: 46 ft. | MAIN FLOOR: 1772 sq.ft. | UPPER FLOOR: 0 sq.ft. | TOTAL AREA: 1772 sq.ft.



See over 400 Plans at [www.linwoodhomes.com](http://www.linwoodhomes.com)  
[mtaylor@linwoodhomes.com](mailto:mtaylor@linwoodhomes.com) 1-800-267-4586

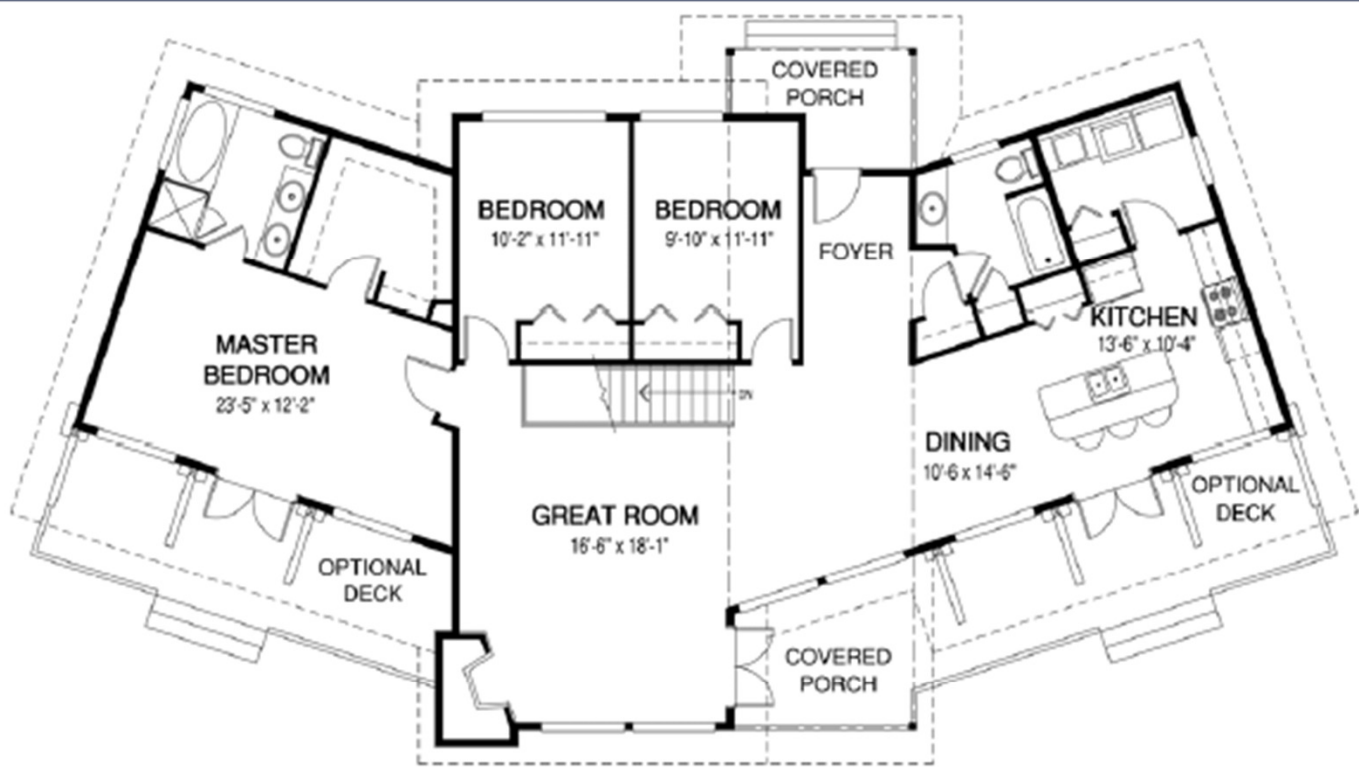


# The Albion



Designs, Floor Plans & Images © Linwood Homes Ltd.

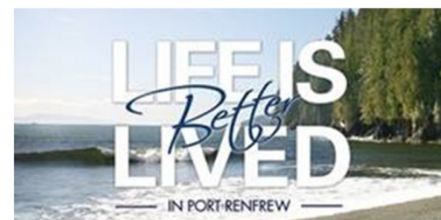
WIDTH: 74 ft | DEPTH: 43 ft | MAIN FLOOR: 1828 sq.ft. | UPPER FLOOR: — sq.ft. | TOTAL AREA: 1828 sq.ft.



MAIN FLOOR



See over 400 Plans at [www.linwoodhomes.com](http://www.linwoodhomes.com)  
mtaylor@linwoodhomes.com 1-800-267-4586



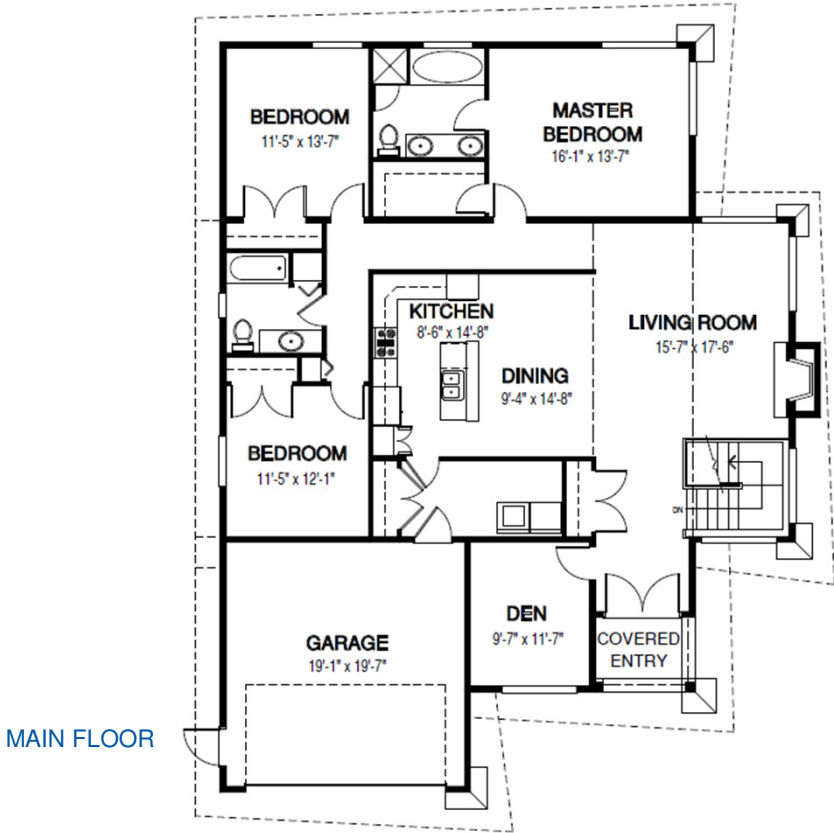


# The Fernwood

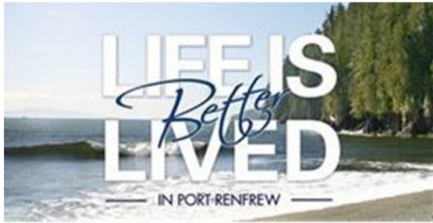


Designs, Floor Plans & Images © Linwood Homes Ltd.

WIDTH: 46 ft. | DEPTH: 60 ft. | MAIN FLOOR: 1902 sq.ft. | UPPER FLOOR: 0 sq.ft. | TOTAL AREA: 1902 sq.ft.



See over 400 Plans at [www.linwoodhomes.com](http://www.linwoodhomes.com)  
[mtaylor@linwoodhomes.com](mailto:mtaylor@linwoodhomes.com) 1-800-267-4586



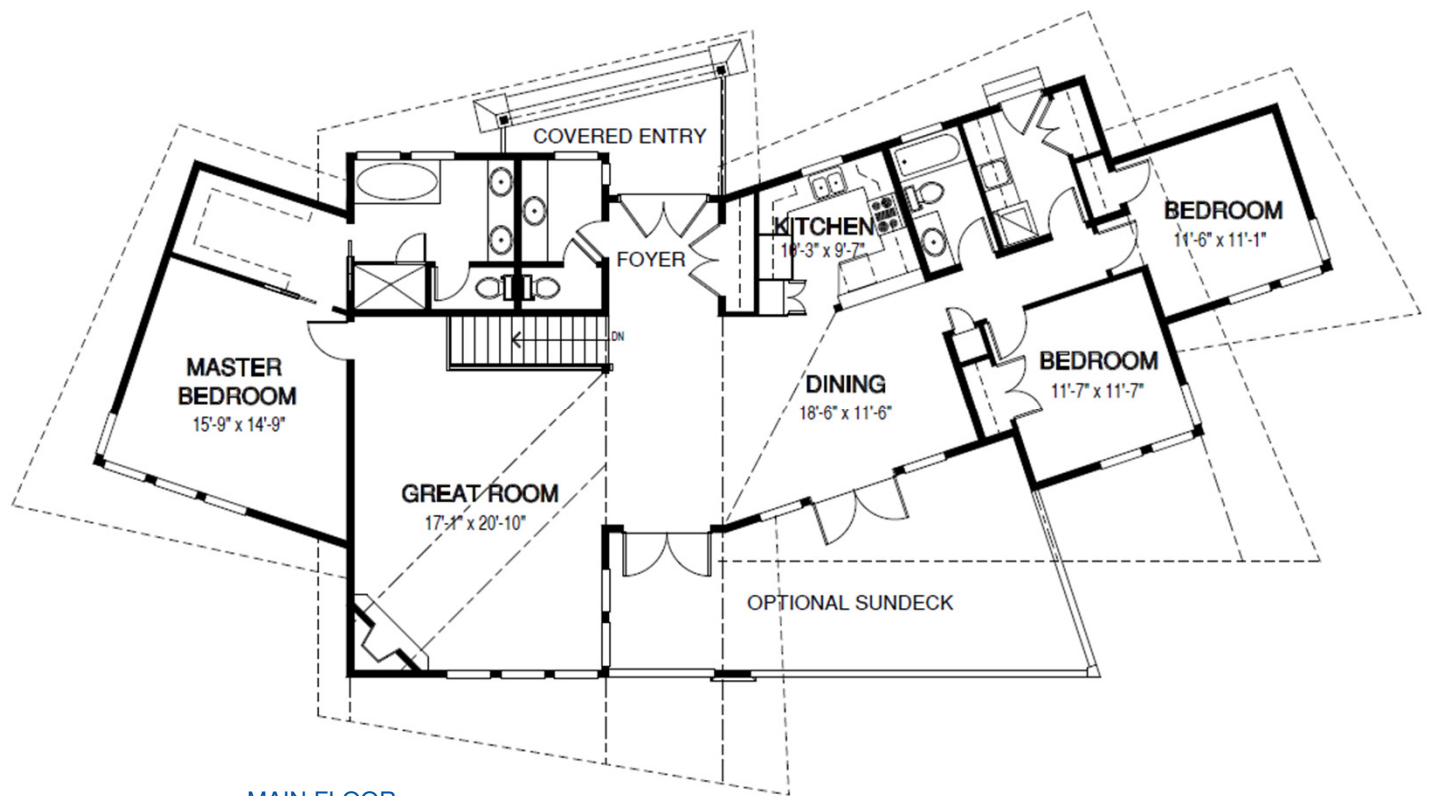


# The Discovery



Designs, Floor Plans & Images © Linwood Homes Ltd.

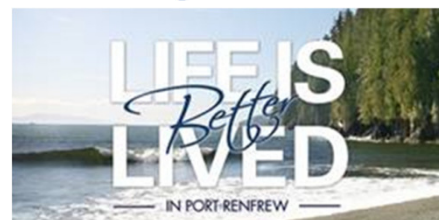
WIDTH: 86 ft. | DEPTH: 42 ft. | MAIN FLOOR: 2002 sq.ft. | UPPER FLOOR: 0 sq.ft. | TOTAL AREA: 2002 sq.ft.



MAIN FLOOR



See over 400 Plans at [www.linwoodhomes.com](http://www.linwoodhomes.com)  
[mtaylor@linwoodhomes.com](mailto:mtaylor@linwoodhomes.com) 1-800-267-4586



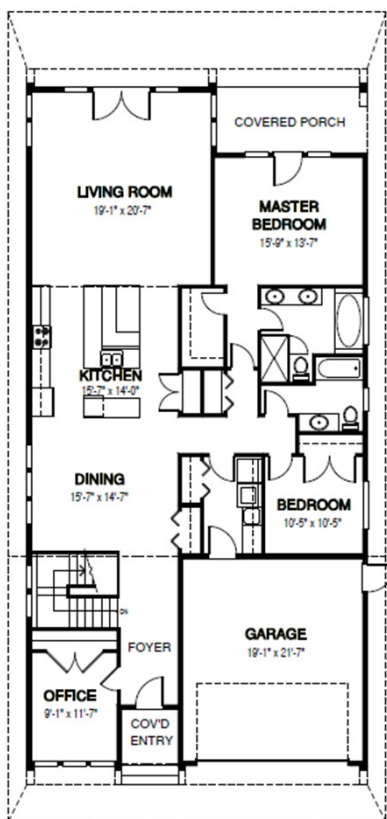


# The Basewater



Designs, Floor Plans & Images © Linwood Homes Ltd.

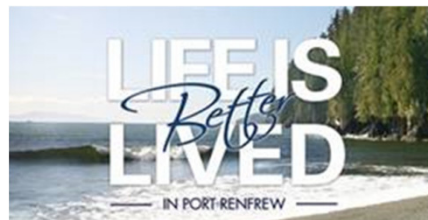
WIDTH: 36 ft. | DEPTH: 73 ft. | MAIN FLOOR: 2011 sq.ft. | UPPER FLOOR: 0 sq.ft. | TOTAL AREA: 2011 sq.ft.



MAIN FLOOR



See over 400 Plans at [www.linwoodhomes.com](http://www.linwoodhomes.com)  
[mtaylor@linwoodhomes.com](mailto:mtaylor@linwoodhomes.com) 1-800-267-4586

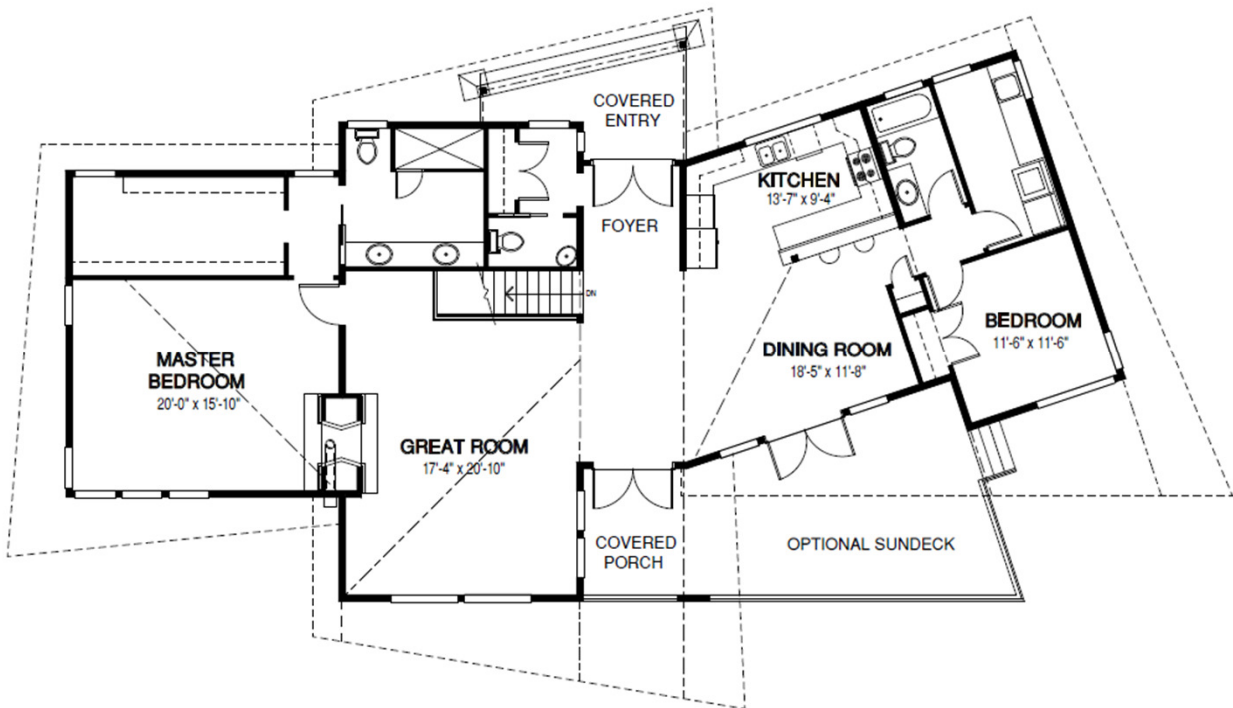


# The Portico



Designs, Floor Plans & Images © Linwood Homes Ltd.

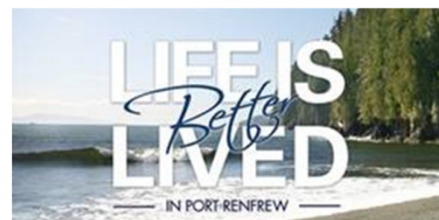
WIDTH: 80 ft. | DEPTH: 42 ft. | MAIN FLOOR: 2040 sq.ft. | UPPER FLOOR: 0 sq.ft. | TOTAL AREA: 2040 sq.ft.



MAIN FLOOR



See over 400 Plans at [www.linwoodhomes.com](http://www.linwoodhomes.com)  
[mtaylor@linwoodhomes.com](mailto:mtaylor@linwoodhomes.com) 1-800-267-4586



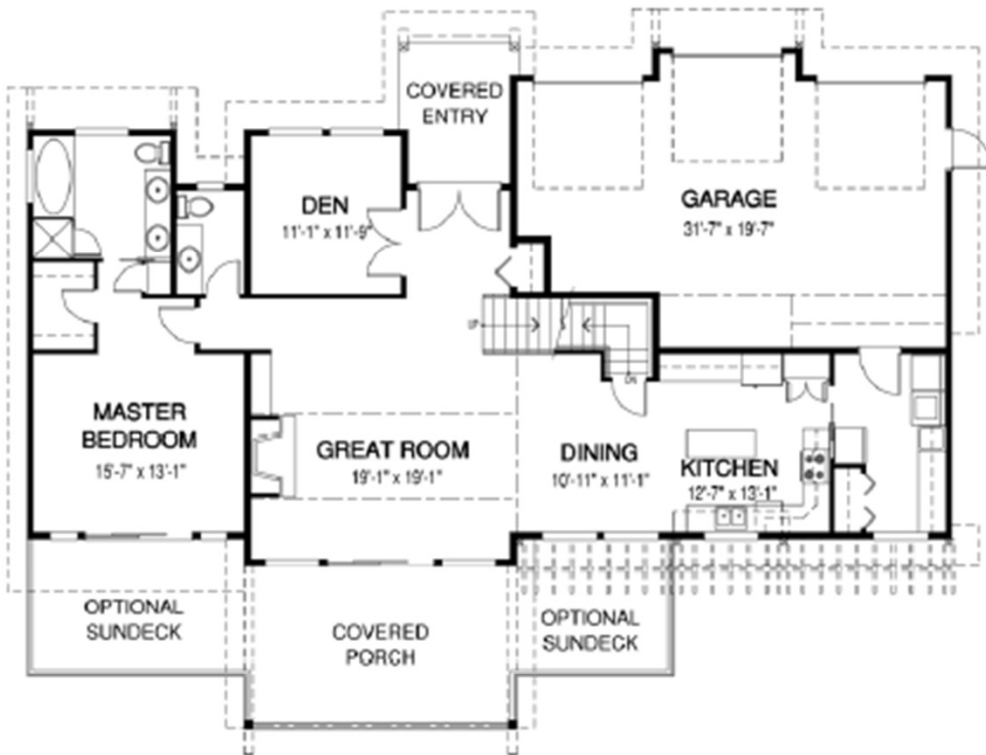


# The Tobiano

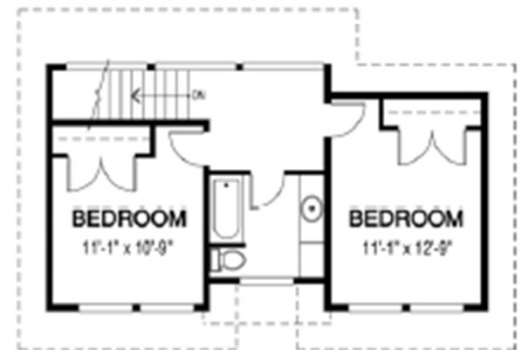


Designs, Floor Plans & Images © Linwood Homes Ltd.

WIDTH: 68 ft. | DEPTH: 51 ft. | MAIN FLOOR: 1568 sq.ft. | UPPER FLOOR: 502 sq.ft. | TOTAL AREA: 2070 sq.ft.



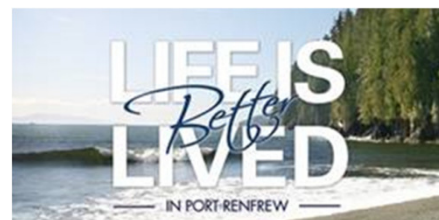
MAIN FLOOR



UPPER FLOOR



See over 400 Plans at [www.linwoodhomes.com](http://www.linwoodhomes.com)  
[mtaylor@linwoodhomes.com](mailto:mtaylor@linwoodhomes.com) 1-800-267-4586





## *Mid-Grade Specifications*

### Optional Upgrades

- Cedar liner on ceiling
- ICF concrete walls
- Custom upgrades available

### Structural

Engineered concrete, two double rows of re-bar  
Foundation per design drawings (basement/crawlspace)  
Cedar Deck with P.T. Structure as shown

### Floor System

5/8" plywood board on 2x10 SPF wood joists at 16" on center

### Windows and Exterior Doors

Exterior entry doors- Jeld-Wen Millwork insulated steel with painted finish  
Windows- white or tan dual pane, argon filled Milgard windows, slider/single hung and picture units

### Plumbing

Septic System- Extra as needed for lot and design  
Kitchen Sink- Two bowl under-mount, stainless steel with single lever chrome tap  
Bathroom Tub/Shower- 1 piece enclosure w/ one row of tile  
Bathroom Tub Filler- Two handle polished chrome  
Bathroom Basin- White top mounted with single lever chrome tap  
Toilet- low flow with regular bowl

### Roof System

CertainTeed Landmark fibreglass shingles with lifetime warrantee  
2x12 solid wood D. Fir wood joists w/ 2x4 cross strapping, or Flat Ceiling Engineered Truss per design

### Landscaping

Lot graded to final design grades with site excavated top soil  
Graveled parking area for two vehicles and driveway from street

### Heating/Electrical

Electric or gas forced air furnace  
200 amp service panel  
Pre-selected upgraded interior and exterior lighting package  
Cable TV, phone and CAT5 cable wired in

### Exterior Finishes

Pre-painted fibre cement wood grain 8" lap siding  
Timber features at gable ends, at front and rear of home per concept plans  
Primed 1x6 tongue and groove pine soffit  
Primed comb-face Cedar Fascia

### Interior Finishes

Baseboard- 1x4 pine  
Window and door casing- 1x4 pine  
Interior doors- 6'-8" 6 panel, Paint grade doors  
Railings- wood handrail and metal or wood spindle railing  
Interior door hardware- traditional or contemporary, knob/lever style passage and privacy

### Cabinetry & Countertops

Shaker style alder, maple or oak cabinetry in kitchen and bathroom  
High-end Laminate with wood edging Countertops

### Flooring

Pre-finished engineered hardwood or laminate in common areas  
Carpet for stairs, second floor hallway and bedrooms  
Ceramic tile for kitchen, bathroom and entry  
Stairs to basement and basement floor – painted finish  
Ceramic tile backsplash from countertop to underside of upper cabinet w/ accent tile strip  
Ceramic tile backsplash (one row) at bathroom vanities

### Appliances

Stainless steel electric range, 18 c.f. refrigerator, and dishwasher  
Space saver microwave/hood fan combination



See over 400 Plans at [www.linwoodhomes.com](http://www.linwoodhomes.com)  
[mtaylor@linwoodhomes.com](mailto:mtaylor@linwoodhomes.com) 1-800-267-4586

